



Linkspreed
L2B

L2B LINKSPREED TO BUSINESS

WE DIGITIZE BUSINESS PROCESSES AND BIND PROJECTS AND CUSTOMERS TO YOU IN THE LONG TERM!

SHAPE THE FUTURE

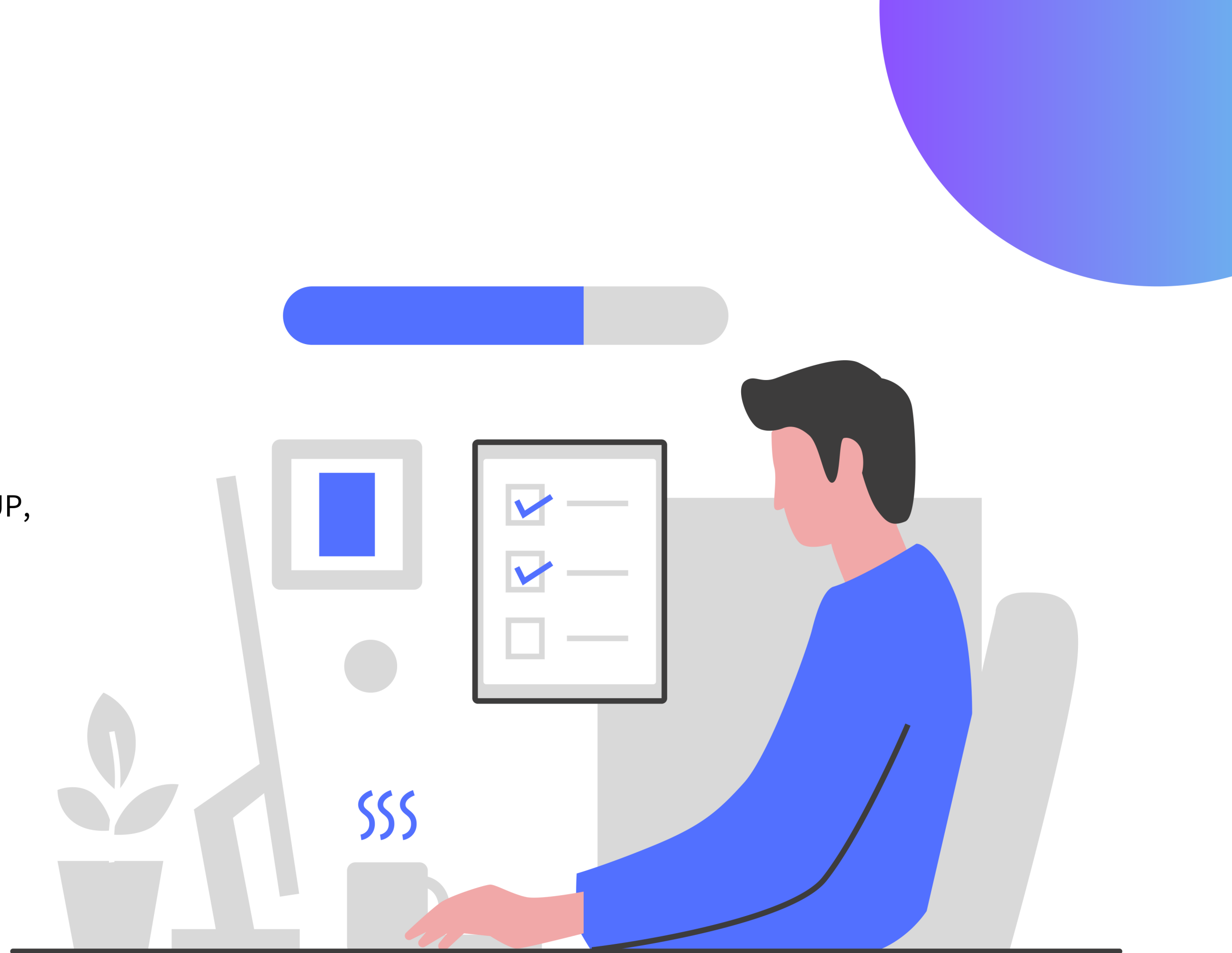


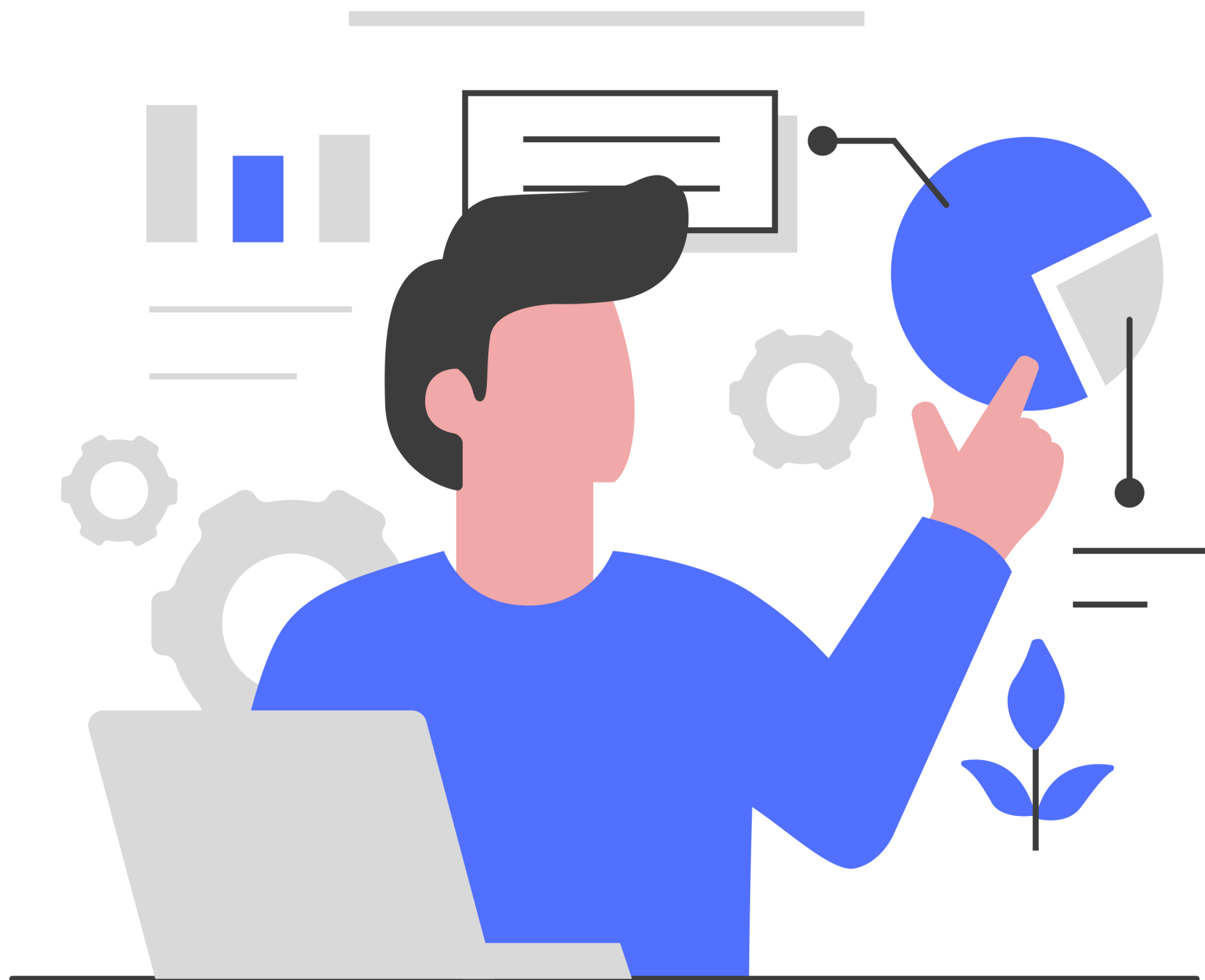
WHAT IS L2B ACTUALLY?

L2B IS...

a product range of the Linkspreed GROUP, which specializes entirely in developing CRM solutions and other platforms for business processes.

L2B.LINKSPREED.COM





WHAT DOES LINKSPREED OFFER YOU?

01. LINKSPREED FRANCHISE

~ 160 B2C platforms in 3 sectors for you to start your startup

02. L2B (LINKSPREED TO BUSINESS)

~ 60 B2B modules for companies to better manage their projects and customers.

03. LINKSPREED AI

LI, CaLM and AIDA - 3 platforms to use AI efficiently.

04. ... AND MUCH MORE

We have other projects in the areas of Web3, gaming and co.

LINKSPREED TO BUSINESS

CRM APPLICATIONS

We build CRM solutions to bind your customers to you in the long term.

PROJECTS & TEAM

Our software can manage your team and your projects.

US SO MUCH MORE...

Whether data storage or intranets - there is so much more!



WHAT IS OUR VISION?

“L2B SHOULD ALSO ENABLE SMALL STARTUPS, SOCIAL PROJECTS AND NEWLY FOUNDED COMPANIES TO DIGITIZE THEIR BUSINESS CHEAPLY.”

OUR MESSAGE

The size of your company does not matter in the availability of L2B. We create individual price plans for you and your vision.



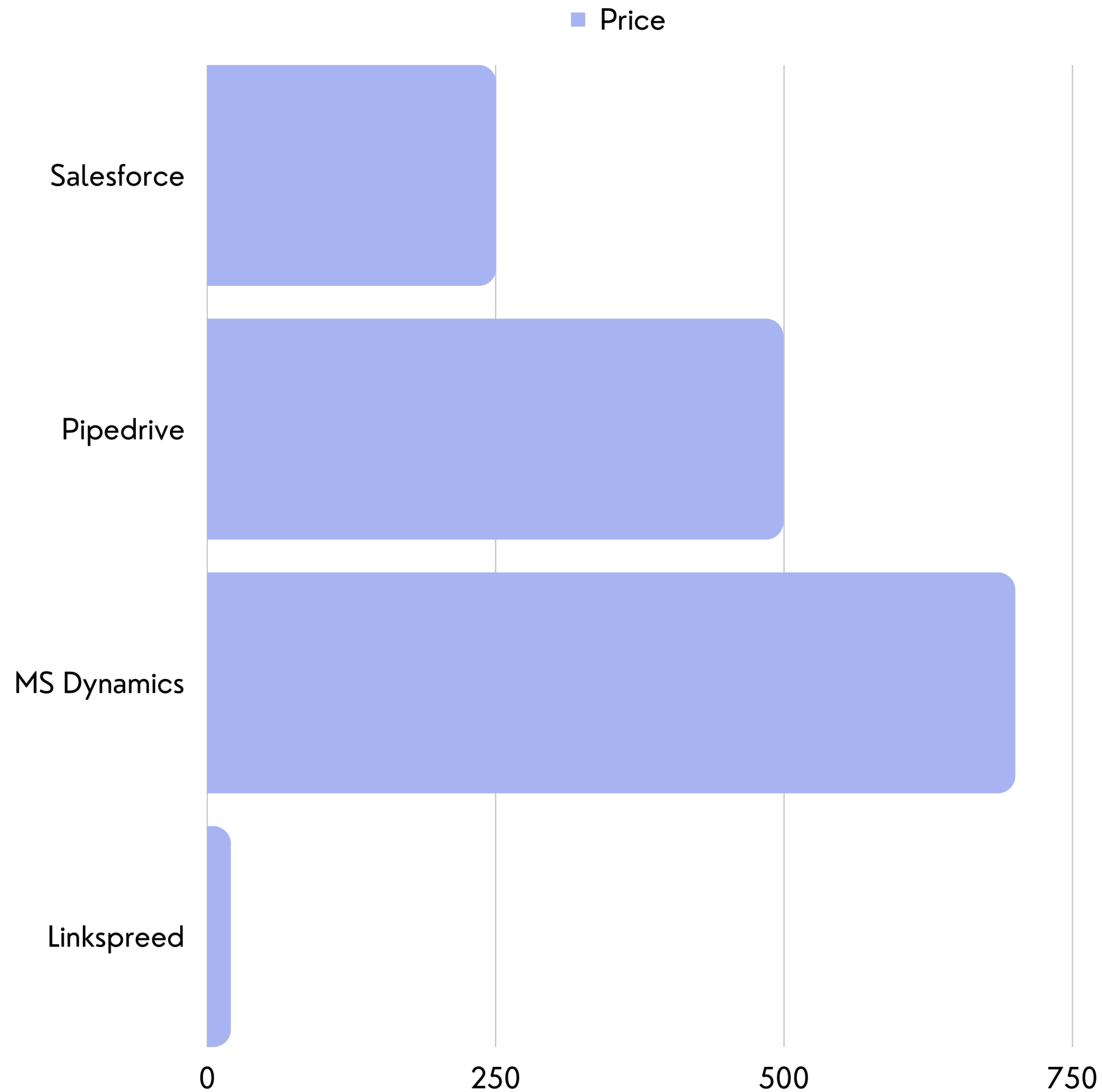
LINKSPREED MISSION

**WE ARE PURSUING THE GOAL OF
REPLACING LARGE ONLINE
MONOPOLIES WITH SMALL STARTUPS.**

BECAUSE ...

The 5 largest Internet companies account for almost 70% of the world's Internet traffic and this creates an enormous dependency.





CRM PLATFORMS IN COMPARISON



UNLIMITED USE

Our prices are individual, starting at €20/month and offer unlimited use.



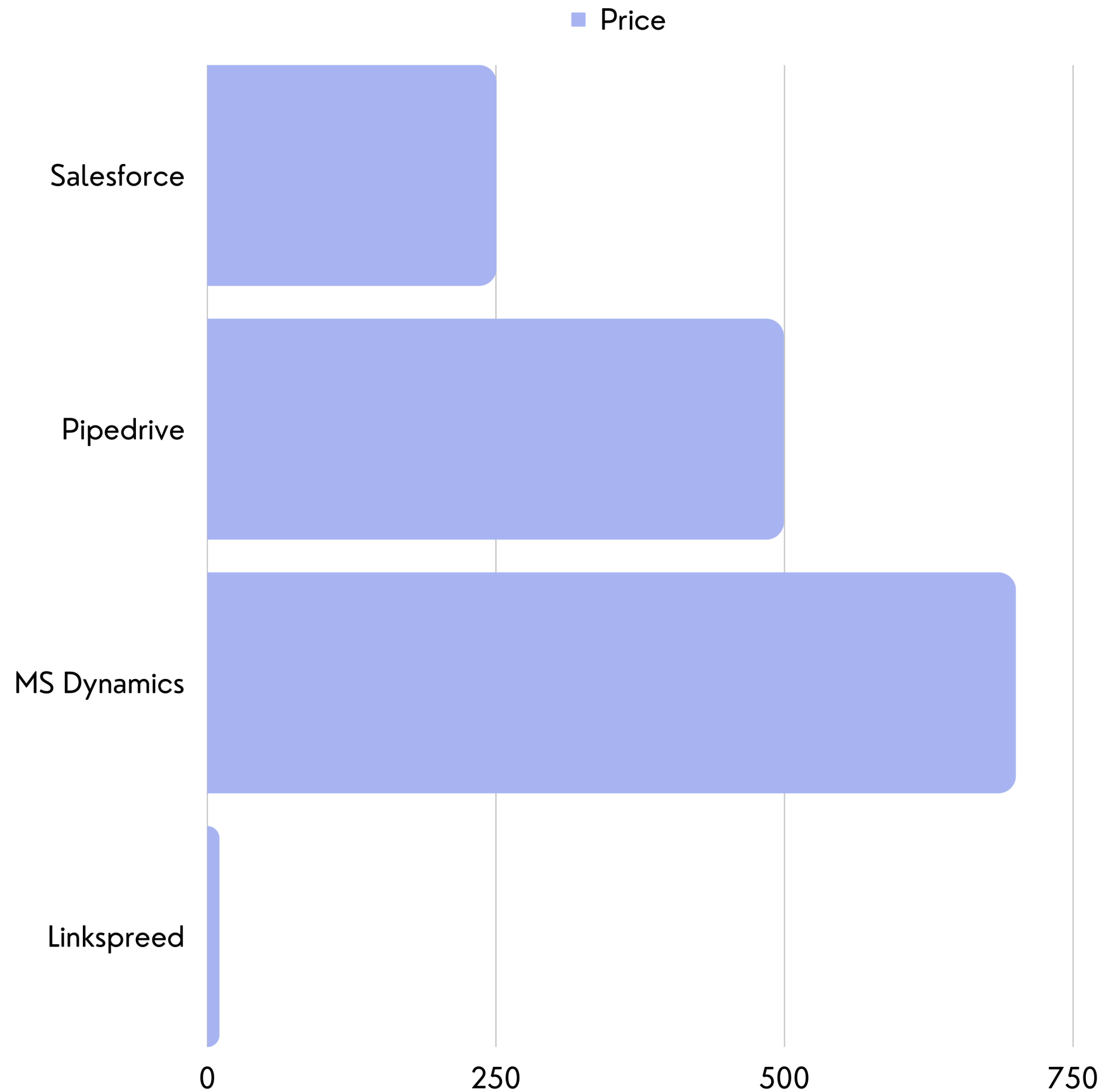
SERVER COSTS

Even with the additional 10€/month server costs, we are still cheap!

PRICES FOR ...

- A team of 10 people
- Cloud based with all functions





CRM FOR NONPROFIT



NO LICENSE FEE

As a non-profit organization with a social aspect, you don't pay a license fee!



SERVER COSTS

There are only the costs of setting up your infrastructure of 10€/month.

PRICES FOR ...

- A team of 10 people
- Cloud based with all functions



WHAT'S INCLUDED?



100% OF ALL FUNCTIONS

All functions from our demo are included!

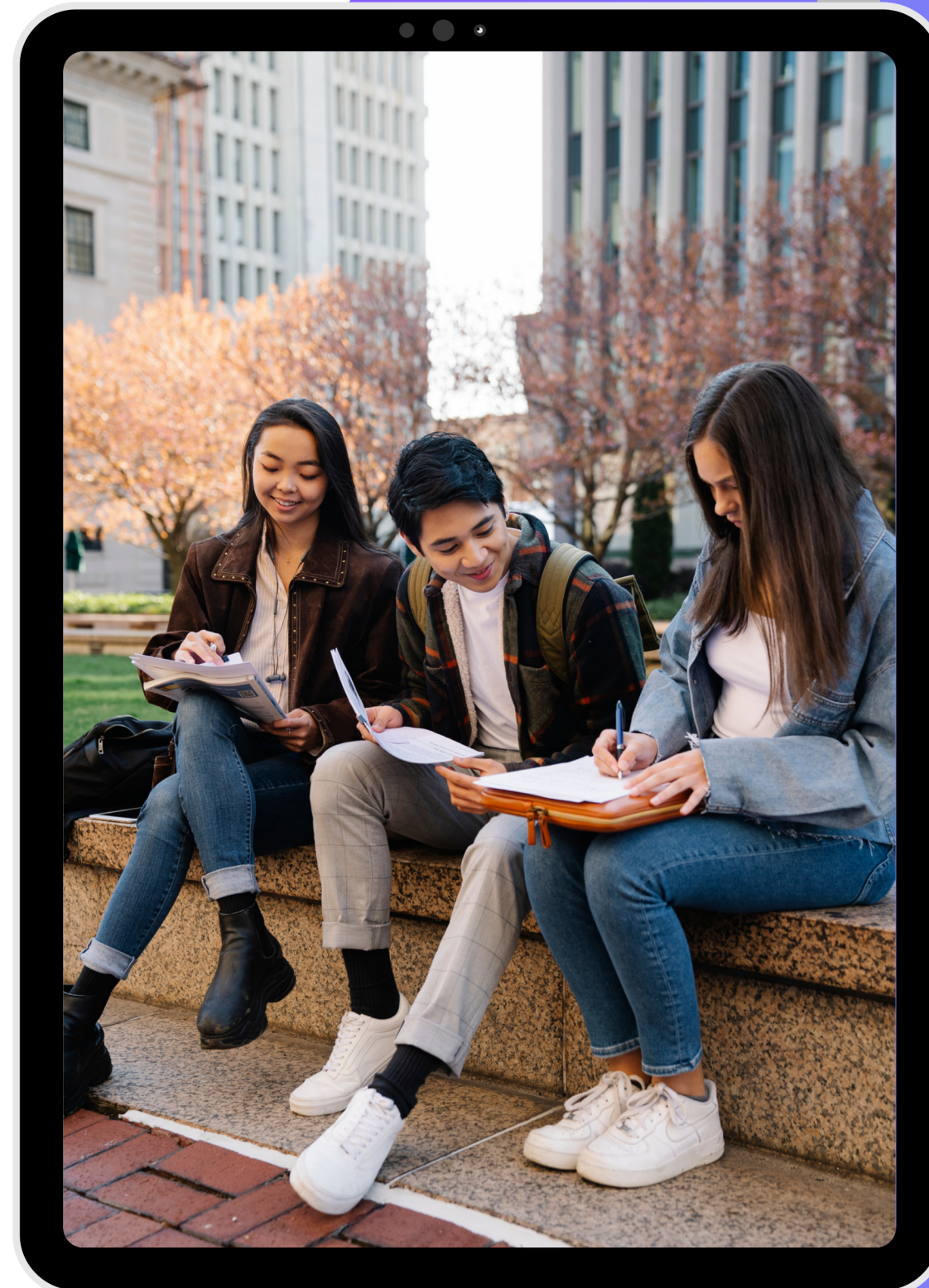
CRM, HRM, POS, ERP, ...



100%

TOP FEATURES

- customer management
- point of sale
- accounting
- team management
- manage projects
-



INDIVIDUAL PRICES



INDIVIDUAL PRICES

Except for "non-profit" there is no fixed price - everything individually.



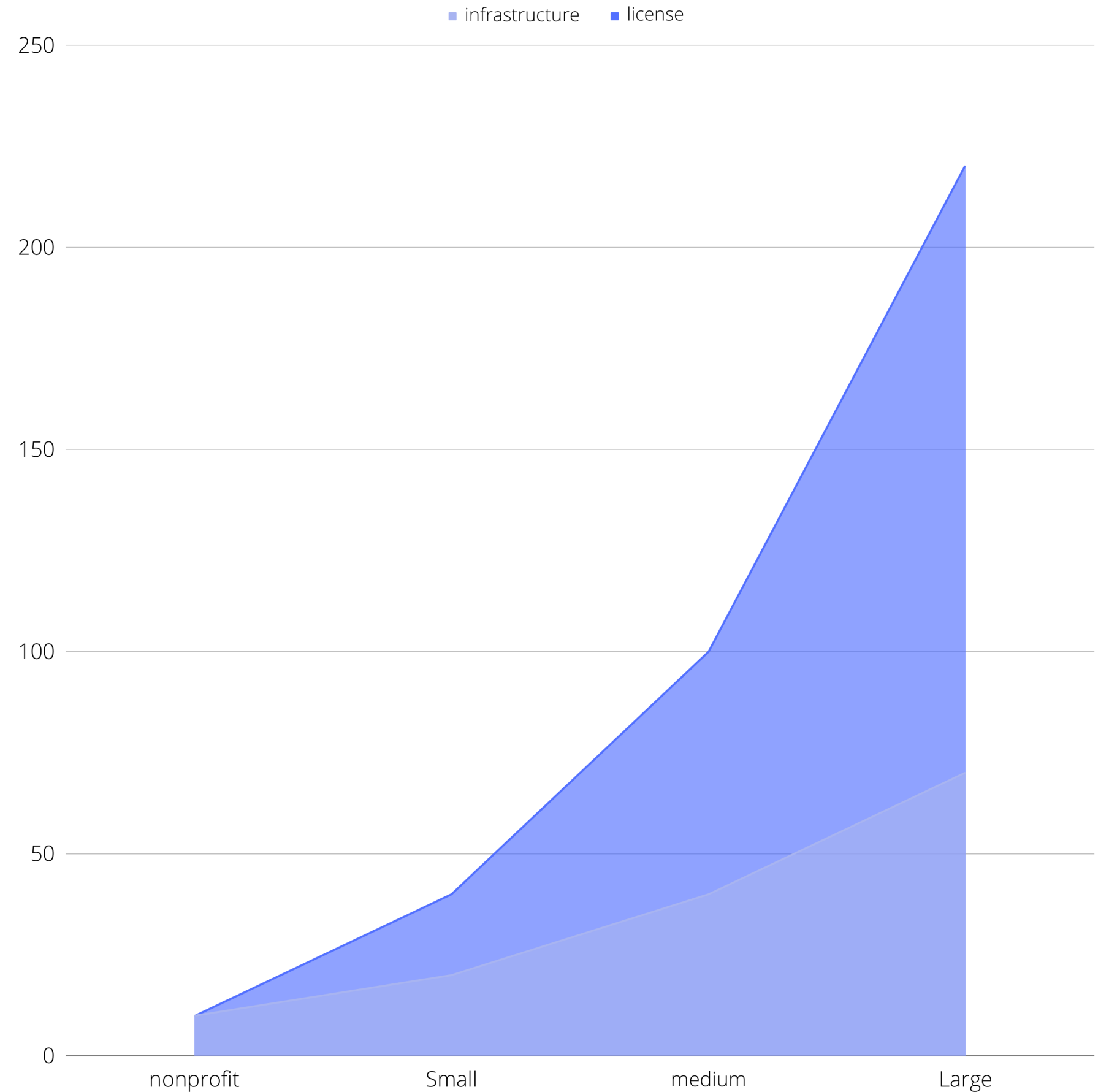
SERVERS + INFRASTRUCTURE

Your individual costs for the L2B infrastructure.



LICENSE

We calculate your individual license costs based on various factors.

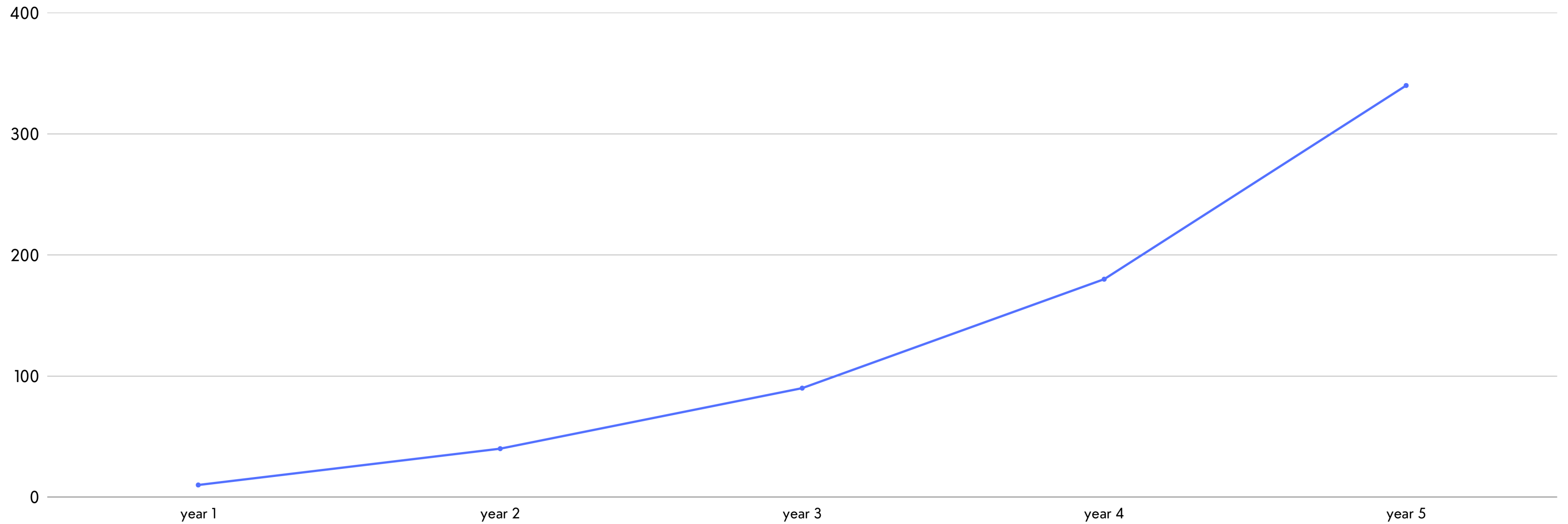


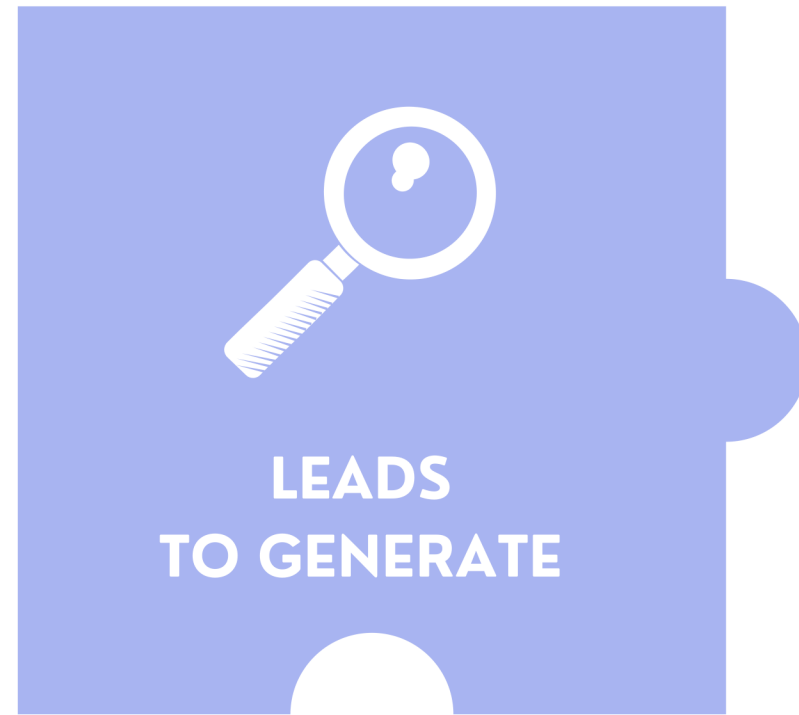
POSSIBLE PREDICTIONS



SCALE WIDER

L2B helps you with your scaling -
organize, arrange & structure.





BENEFITS WITH L2B

SCALE FAST

We live dynamic scaling and L2B will help you!

TEAM MANAGEMENT

It doesn't matter whether you're starting out on your own or have 50 employees. You always have your team in mind.

MANAGE DATA

Whether invoices, leads, customers, projects or co. You have everything at a glance!

GENERATE LEADS

From a simple lead to a long-term customer - you can enter any prospect!

BENEFITS FOR YOUR CUSTOMERS WITH L2B

OWN PORTAL

Your customers can log in at any time and even register themselves if necessary.

ALL PROJECTS AT A GLANCE

Your customers see all their projects and the status of the processing.

ONE CALENDAR - OR TWO?

There is a calendar and you decide what others see. Assign different projects to your employees and customers.

SUPPORT - EVERYTHING FROM A SINGLE SOURCE

Fast contact and strong support - your customers receive all this with just a few clicks!

... AND SO MUCH MORE!



INFRASTRUCTURE + INSTALLATION



INFRASTRUCTURE

We take care of your infrastructure and set up the server.



INSTALLATION + MAINTENANCE

We install the software for you and you always get updates!

EXTRAS

Costs between mostly 10€ to 20€ for the server are borne by the user.



AND THEN THE LAUNCH BEGINS!



NEXT DAY - 1 WEEK

In some cases we deliver the complete software within 24 hours.

WE TAKE CARE OF EVERYTHING



AND AFTER A WEEK...

you can start integrating your customers and projects into our L2B platform at the latest.





Linkspreed
L2B

LET'S SHAPE THE FUTURE

marc.herdina@linkspreed.com
<https://www.linkedin.com/in/marc-herdina/>
+49 1776664219

